



DUNI

DUNIFORM[®]
Smarter in-house packaging

DUNIFORM®

For over 40 years, the Duniform® concept has set the standard for simple, smart and hygiene in-house packaging. Over that time, it has helped to drive success for many leading hotels, restaurants, MSR companies, caterers, and retailers.

Back in 1977 the concept was much less comprehensive. Since then, built on the idea that good food deserves good packaging, it has consistently grown in popularity and scale. Today, while it has expanded to match our customers' needs, it still offers the same core benefits:

- 1. One-stop-shop convenience:** Get everything from machines to transport solutions from one supplier – and it's all designed to work together.
- 2. Simplicity in design:** Streamline preparation, transport and service – and ensure a rewarding customer experience.
- 3. Grows with your business:** Design a Duniform® solution around the needs of your business, whatever its size, which you can tailor to changing needs.
- 4. Confidence-inspiring quality:** Stand out with Duniform® machines, trays, films which combine top-quality materials and design excellence.
- 5. Top-quality service:** Relax with excellent local support for the lifetime of your solution.
- 6. Value creation opportunities:** Offer products that you couldn't before, stimulate impulse purchases and extend the shelf-life of your food.
- 7. Optimal presentation and food safety:** Maximise hygiene and present your culinary creations in their best possible light.

40 YEARS OF SUCCESS

Duniform started life in 1977 to meet the need for a smart in-house packaging concept. Paper trays and paper lids were used first, along with the partly wooden DF83 and DF84 machines. Since then, many innovations have followed. These include easy-to-open sealable trays, clear films that show food at its best, fully automatic motorised machines, and MAP functionalities.

GROWS WITH YOUR BUSINESS

All about simplicity and versatility, Duniform® evolves to match your needs, as and when they change. For example, if the number of your customers grows, you can easily switch from a manual to semi-automatic machine.

You also get top-quality local support, which even includes training, so you can maximise the value of your investment.

SIMPLY CHOOSE:

1. MACHINE
2. TRAYS
3. FILMS
4. TRANSPORT SOLUTION
5. SERVICE PACKAGE

1.



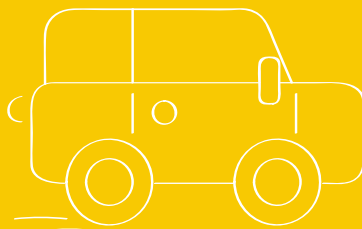
2.



3.



4.



5.



"Everything in the Duniform® concept is designed to work together. So, compared to using separate suppliers, it makes life much easier."

STANDARD SIZES, STANDOUT STYLE

Duniform® trays come in elegant 'straight to the table' formats to suit all types of frozen, chilled and warm food. They also offer a wide variety of GN compartment sizes, giving you full control over volumes, costs and end-user experience. The icing on the cake? They are designed for convenient stackability and transport too.



OPTIMISE
CONVENIENCE AND
COST-MANAGEMENT



MATERIALS THAT MAKE THE RIGHT IMPRESSION

Different materials suit different foods. Mindful of this, we offer a full selection for hot, cold and microwaveable cuisine, including a market-leading choice of eco-conscious materials, such as wood fibre, cardboard, RPET and bioplastic. All top-quality, these accentuate the appeal of food and deliver excellent performance. But which one is best for your business?

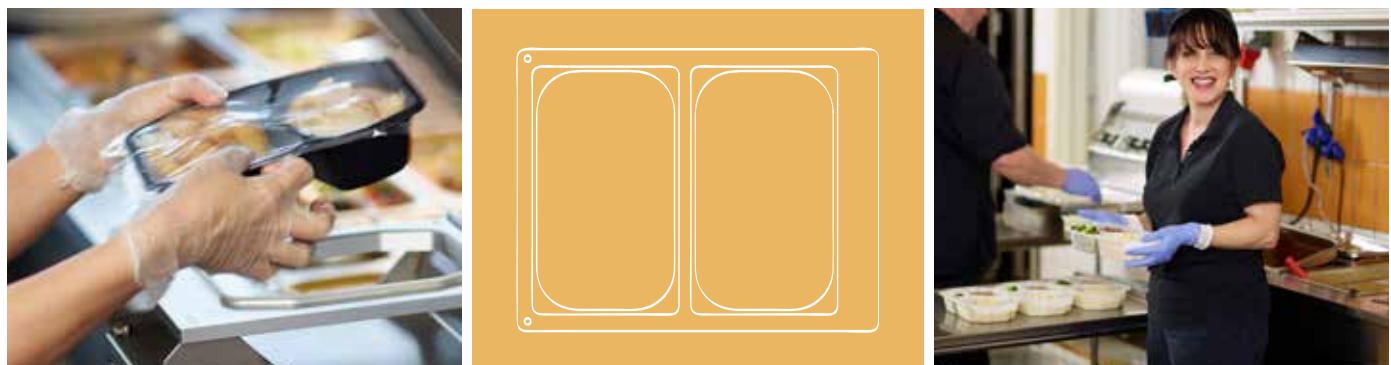
Our team is standing by to provide guidance.



Top-quality materials which combine strength, elegance and excellent functional performance.



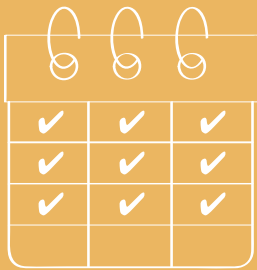
Eco-conscious materials which offer excellent performance and reduce environmental impact



"According to our research, 80% of HORECA businesses always or sometimes look for environmentally profiled products. To meet this need, we offer a wide selection of eco-conscious trays."

FILMS THAT PROMOTE YOUR BUSINESS

If you want to make your food look delicious, encourage impulse purchases and ensure a leak-free, secure fit, Duniform® films tick the boxes. You can choose between Biobased, PP, PET and Universal films. These are crystal-clear and can be specified to prevent fogging. Even better, we can personalise them for your business – making your packaging a powerful promotional tool.



MAXIMISE
ON-SHELF IMPACT



SEAL SECURELY, PEAL EASILY

PERSONALISE YOUR FILM



"In today's globalised world, there is a growing demand for individualisation. Customising films offers a simple, cost-effective way to meet this need – and build your brand. Our customisation team can organise this for you."

FIRST-CLASS TRANSPORT SOLUTIONS

From your customers' perspective, your food is only as good as the condition it arrives in. With the Duniform® transport solutions – thermo-bags and boxes, temperature control equipment and trolleys – you can make sure it arrives in tip-top condition. What's more, you can work smarter too by simplifying preparation, loading and delivery.



COOLING PLATE



HEATING PLATE



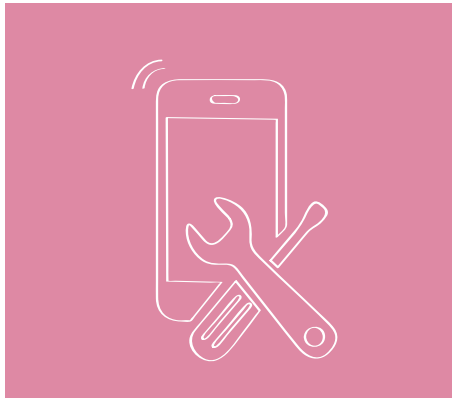
"Our transport solutions let you pack, stack and deliver with total efficiency. They also help to ensure that your dishes arrive looking as tasty as when they left the kitchen."

END-TO-END SERVICE SUPPORT AND TRAINING

Choose Duniform® and you get top-quality support for the lifetime of your solution. This enables you to consistently maximise its value and receive speedy, local technical assistance. Right behind you every step of the way, we even offer staff training for the more sophisticated machines.



"We are dedicated to providing service that's a cut above. For instance, our service agents always have a stock of spare parts available to provide the speediest possible service."



"With the Duniform® concept you get the best of both worlds: lifetime local support and the benefits of Duni's global network."

The Duniform® one-stop-shop concept has set the standard for simple, smart in-house packaging. Over time, it has helped to drive success for many leading hotels, restaurants, MSR companies, caterers, and retailers.

Unlike off-the-shelf solutions

Different to many alternatives, all Duniform® products are designed to work together. That means you get optimal convenience and your customers get a consistently great experience. What’s more there are no complicated ordering hassles.

Tailored to your business needs

Another big advantage of the Duniform concept is the way it matches – and grows with – your business. With such a wide choice of machines, materials and trays available you can always get exactly the right solution for your needs.

Eco-conscious materials

The Duniform® concept includes many innovative, eco-conscious materials, such as fibre based, bioplastic and recycled materials. These not only offer top-level performance and practicality; they also send an attractive message about your business to your customers.

A flexible finishing touch

The sealing films for Duniform® can be customised for an added personal touch. Now we even offer profile printed stickers & sleeves that enable you to promote your brand on-the-go.



A WORD FROM OUR CLIENTS



“The design is important to me and my customers. So are sustainable materials and the smart filling functionality.”

Mathias Pilblad,
Meatballs for the People



“Duniform® trays have a quality look and feel. Our guests definitely appreciate them.”

Manh Phan Hien,
owner of Zen Thai



“Duniform® bioplastic trays are a very good choice for us. They allow us to increase the number of sustainable products we use.”

Magnus Lingvörn,
Head chef at the Mathildborg kitchen





MENU FIBRE TRAYS

- European sourced wood fibre
- Compostable
- Biobased lamination
- Sealable with biobased sealing film

Material: Laminated wood fibre -20°C to +140°C
 Temp (Time): 140°C<45min,
 Micro (900W)<3min, -20° (unlimited)

BioPak
 It doesn't cost the earth



No	Article	Description	Comp	Colour	Cassette DF10/20	Size LxWxH (mm)	Vol (ml)	Qty/Cart.
1	196581	Menu Fibre Tray	1	Natural	140162*	227x178x45	1300	1x220
2	196582	Menu Fibre Tray	2	Natural	192176*	227x178x45	640/465	1x220
3	196583	Menu Fibre Tray	3	Natural	192177*	227x178x45	190/250/500	1x220
4	196584	1/2 GN Fibre Tray	1	Natural	141550 (DF15/25)	325x265x52	3020	1x140

*No. 1 DF15/25 cassette, 153432 (2 cav.) also available

*No. 2 DF15/25 cassette, 198098 (2 cav.) also available

*No. 3 DF15/25 cassette, 198099 (2 cav.) also available



1 New



2 New



3 New



4 New

SEALING FILM FOR FIBRE TRAYS

- Compostable
- Biobased

Cooking temp. max: 220°C (60min)

BioPak
 It doesn't cost the earth



No	Article	Description	Sealing temp.	Thickness (µm)	Size (mm x m)	Qty/Cart.
1	196585	Bio sealing film	110-140°C	30	185x400	1x1
2	196586	Bio sealing film	110-140°C	30	272x400	1x1



1 New



2 New

FORUM CARDBOARD/PE TRAYS

- 85% less plastic
- Made in Europe
- Easy recycling
- Sustainable look on display
- Figure cutting and MAP available on larger machines

Material: Cardboard/PE ±0°C to +100°C, hot fill & microwarmable.
Temp (Time): MW <15min, chilled <3 days



No	Article	Description	Colour	Cassette DF10/20	Size LxWxH (mm)	Vol (ml)	Qty/Cart.
1	197373	Forum Tray	Printed	197433	187x137x50	785	1x420
2	192166	Forum Tray	Printed	192162*	178x165x45	918	1x270
3	192167	Forum Tray	Printed	192162*	178x165x59	1114	1x330
4	194836	Forum Tray	Printed	140162*	227x178x40	1200	1x270

*No. 2-3 DF15/DF25 cassette, 194470 (2 cav.), also available

*No. 4 DF15/25 cassette, 153432 (2 cav.), also available



1 New



2



3



4 New

CARDBOARD/PE TRAYS

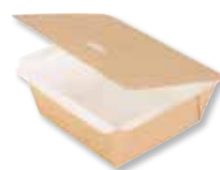
- Made from a renewable resource
- FSC®-certified cardboard
- Clear window to display food

Material: Cardboard/PE ±0°C to +100°C, hot fill & microwarmable.
Temp (Time): MW <15min, chilled <3 days



No	Article	Description	Colour	Cassette DF10/20	Size LxWxH (mm)	Vol (ml)	Qty/Cart.
1	162679	Cardboard Tray	Brown	160053*	115x115x50	550	1x250
2	162680	Cardboard Tray	Brown	160051	200x120x45	900	1x250
3	162681	Cardboard Tray	Brown	160050	165x165x45	1000	1x250
4	162682	Cardboard Tray	Brown	161267	195x165x45	1200	1x250

*No. 1 DF15/25 cassette, 184636 (4 cav.), also available



1



2



3



4

CARDBOARD/PET MENU TRAYS

- High temperature resistance
- Combine with PET or universal sealing film

Material: Cardboard/PET -20°C to +220°C
Temp (Time): +220°C (1h), +70°C (2h), -20°C (unlimited)



No.	Article	Description	Colour	Cassette DF10/20	Size LxWxH (mm)	Vol (ml)	Qty/Cart.
1	173081	Cardboard Tray	White	140162*	227x177x40	1000	1x300
2	173082	Cardboard Tray	White	140163/187026 (vert.)	186x136x35	550	1x560
3	173083	Cardboard Tray	White	140163/187026 (vert.)	186x136x45	720	1x520

*No. 1 DF 15/DF25 cassette, 153432 (2 cav.) also available



2

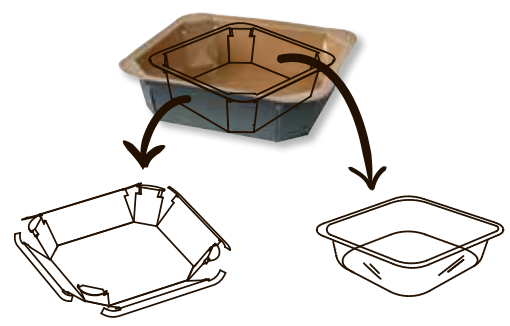


3

NEW



RECYCLING MADE EASY WITH FORUM TRAYS



Made of FSC® certified paperboard

Made of plastic



POLARDELI MINIMALIST DESIGN MAXIMUM PERFORMANCE

Polardeli boxes bring a fresh perspective to mindful packaging design. Ideal for delis, they protect chilled food while their transparent, recycled PET material makes it look delicious. Even better, they offer top-tier functionality and work with DuniForm® sealing machines and lids.

► **WATCH THE MOVIE**

Check out the Polardeli movie at Duni.com/Polardeli



POLARDELI

- Made from recycled PET
- Tamper-proof closing with Duniform® sealing
- Prolonged shelf life
- Matching stackable lids
- Up to 100% RPET



Material: RPET -40 °C to +70 °C

BioPak
It doesn't cost the earth



No	Article	Description	Cassette	Sealing film	Size LxWxH	Vol (ml)	Qty/Cart.
1	187030	Polardeli Mini	187027 DF10/20 (4 cavities) 187037 DF15/25 (6 cavities)	162800	102x80x24	100	1x720
2	187031	Polardeli Petit	187028 DF10/20 (1 cavities) 187036 DF15/25 (2 cavities)	162800	175x115x29	300	1x780
3	187032	Polardeli Medio	187028 DF10/20 (1 cavities) 187036 DF15/25 (2 cavities)	162800	175x115x48	500	1x576
4	187033	Polardeli Grand	187028 DF10/20 (1 cavities) 187036 DF15/25 (2 cavities)	162800	175x115x69	750	1x450
5	187034	Polardeli Lid Mini	-	-	108x86x18	-	1x630
6	187035	Polardeli Lid	-	-	181x121x18	-	1x625



RPET SANDWICH TRAY

- Fully seal sandwiches to extend shelf life
- Made from crystal clear, eco-conscious RPET
- Maximise hygiene and appeal of food
- Map applicable with more sophisticated duniform® machines

Material: RPET max +70°C



No.	Article	Description	Comp	Colour	Material	Cassette	Size(mm) LxWxH	Vol (ml)	Qty/ Cart.
1	185894	Sandwich Tray	1	Transparent	RPET	186166 DF10 (2 cav.), 186165 DF15/25 (3 cav.)	181x96x85	570	1x1200



1



BIOPLASTIC CATER LINE TRAYS

- Made from a renewable resource
- Recyclable
- MAP applicable

Material: Bioplastic -20°C to +120°C.

Temp (Time): +120°C <60min, +100°C <120min, +70°C <240min, +40°C <10days



No	Article	Description	Comp	Colour	Cassette DF10/20*	Size LxWxH (mm)	Volume (ml)	Qty/Cart.
1	175298	Cater Line Tray	1	White	140162	227x178x32	920	1x216
2	175299	Cater Line Tray	1	White	140162	227x178x40	1115	1x216
3	173718	Cater Line Tray	1	White	140162	227x178x50	1345	1x216
4	173719	Cater Line Tray	2	White	159176	227x178x50	645/540	1x216
5	173720	Cater Line Tray	3	White	159177	227x178x50	530/325/235	1x216

*No. 1,-3 DF15/25 cassette, 153432 (2 cav.) also available

No. 4 DF15/25 cassette, 163449 (2 cav.) also available

No. 5 DF15/25 cassette, 163450 (2 cav.) also available



BIOPLASTIC TAKE-AWAY TRAYS

- Made from a renewable resource
- Recyclable
- MAP applicable

Material: Bioplastic -20°C to +120°C

Temp (Time): +120°C (1 h), +70°C(4h), +40°C (10 days), -20°C (unlimited)



No	Article	Description	Comp	Colour	Cassette DF10/20*	Size LxWxH (mm)	Vol (ml)	Qty/Cart.
1	171149	Take-Away Tray	1	White	150020	250x159x43	1100	1x246
2	171150	Take-Away Tray	2	White	150021	250x159x45	700/400	1x246
3	171151	Take-Away Tray	3	White	150022	250x159x48	550/350/200	1x246

*No. 1 DF15 / DF25 cassette, 165911 (2 cav.) also available.

No. 2 DF15 / DF25 cassette, 182975 (2 cav.) also available.

No. 3 DF15 / DF25 cassette, 173050 (2 cav.) also available.





CPET (RECYCLED) MENU TRAYS

- 100% recycled material



Material: CPET -40°C to +220°C.
Temp (Time): +220°C (2h), +70°C (4h), +40°C (10days), -40°C (unlimited)



No	Article	Decription	Comp	Colour	Cassette	Size LxWxH (mm)	Volume (ml)	Qty/ Cart.
1	115495	Menu Tray	1	Black	140162 DF10/20, 153432 DF15/25 (2 cav.)	225x175x34	960	1x300
2	115494	Menu Tray	1	White	140162 DF10/20, 153432 DF15/25 (2 cav.)	225x175x34	960	1x300
3	122018	Menu Tray	1	Black	140162 DF10/20, 153432 DF15/25 (2 cav.)	225x175x43	1200	1x300
4	115503	Menu Tray	1	White	140162 DF10/20, 153432 DF15/25 (2 cav.)	225x175x43	1200	1x300
5	153414	Menu Tray	1	Black	140162 DF10/20, 153432 DF15/25 (2 cav.)	225x175x54	1500	1x270
6	153422	Menu Tray	1	White	140162 DF10/20, 153432 DF15/25 (2 cav.)	225x175x54	1500	1x270
7	151305	Menu Tray	2	Black	140160 DF10/20, 153433 DF15/25 (2 cav.)	225x175x35	515/370	1x250
8	151306	Menu Tray	2	White	140160 DF10/20, 153433 DF15/25 (2 cav.)	225x175x35	515/370	1x250
9	115505	Menu Tray	2	Black	140160 DF10/20, 153433 DF15/25 (2 cav.)	225x175x43	655/455	1x300
10	115504	Menu Tray	2	White	140160 DF10/20, 153433 DF15/25 (2 cav.)	225x175x43	655/455	1x300
11	151307	Menu Tray	3	Black	140158 DF10/20, 152440 DF15/25 (2 cav.)	225x175x34	430/225/165	1x250
12	115506	Menu Tray	3	Black	140158 DF10/20, 152440 DF15/25 (2 cav.)	225x175x43	525/275/205	1x300
13	132346	Menu Tray	3	White	140158 DF10/20, 152440 DF15/25 (2 cav.)	225x175x43	525/275/205	1x300

PP LID FOR CPET MENU TRAYS



Material: PP -20°C to +100°C.
Temp (Time): +100°C <120min, +70°C <120min, +40°C <10days

No	Article	Decription	Colour	Size LxWxH (mm)	Qty/ Cart.
1	196780	Lid for CPET Menu Trays	Transparent	232x182x17	1x210



CPET (RECYCLED) SMALL PORTION TRAYS

- 100% recycled material in trays

Material: CPET -40°C to +220°C
 Temp (Time): +220°C (2h), +70°C (4h), +40°C (10days), -40°C (unlimited)



No.	Article	Description	Colour	Cassette DF10/20	Size LxWxH (mm)	Vol (ml)	Qty/Cart.
1	157356	Small Portion Tray	Black	182540 (2 cav.)	160x103x35	370	1x750
2	115483	Small Portion Tray	Black	140249 (2 cav.)	171x127x35	510	1x900
3	115482	Small Portion Tray	White	140249 (2 cav.)	171x127x35	510	1x900
4	148217	Small Portion Tray	Black	140249 (2 cav.)	171x127x50	670	1x840
5	198043	Small Portion Tray	White	140249 (2 cav.)	171x127x50	670	1x840
6	151304	Small Portion Tray	Black	140163/187026 (long)	187x137x34	600	1x520
7	151375	Small Portion Tray	Black	140163/187026 (long)	187x137x40	700	1x480
8	159111	PP Lid for 151304/151375	Transparent	-	190x138x14	-	1x480
9	115491	Small Portion Tray	White	140164*	188x119x54	760	1x480

*No. 8 DF10/20 cassette, 140169 (2 cav.), also available



PP/MINERAL DUNIFORM® PEARL

- Fits Duniform® machines DF15/25, DF32F to DF44*
- Choice of lids or sealing films
- Personalisable sealing films
- Precise cut around edge when sealed

Material: PP/MIN -20°C to +120°C
 Temp (Time): +120°C (1h), +70°C (4h), +40°C (10 days), -20°C (unlimited)



No.	Article	Description	Comp	Colour	Cassette DF15/25**	Size ØxH (mm)	Vol (ml)	Qty/Cart.
1	176398	Pearl M1	1	Black	182654 (1 cav.)	Ø220x42	990	1x320
2	176397	Pearl M2	2	Black	182654 (1 cav.)	Ø220x42	525/350	1x300
3	176396	Pearl L1	1	Black	182653 (1 cav.)	Ø250x42	1390	1x350
4	176395	Pearl L2	2	Black	182653 (1 cav.)	Ø250x42	750/490	1x300
5	176394	Pearl L3	3	Black	182653 (1 cav.)	Ø250x42	590/370/238	1x300
6	176399	Lid for 176398/176397	-	Transparent	-	Ø257	-	1x220
7	176400	Lid for 176396/176395/ 176394	-	Transparent	-	Ø289	-	1x240

*With figure cutting.

**Only outer rim will be sealed.



PP/MINERAL TAKE-AWAY TRAYS

Material: PP -20°C to +120°C

PP/MIN: -20°C to +120°C

Temp (Time): +120°C (1h), +70°C (4h), +40°C (10days), -20°C (unlimited)



No.	Article	Description	Comp	Colour	Cassette DF10/20*	Material	Size LxWxH (mm)	Vol (ml)	Qty/Cart.
1	161149	Take-Away Tray	1	Black	150020	PP/MIN	250x159x43	1100	1x246
2	155054	Take-Away Tray	1	White	150020	PP	250x159x43	1100	1x246
3	154063	Take-Away Tray	1	Black	150020	PP	250x159x55	1400	1x228
4	154486	Take-Away Tray	1	White	150020	PP	250x159x55	1400	1x228
5	154064	Take-Away Tray	1	Black	150020	PP	250x159x70	1750	1x220
6	154487	Take-Away Tray	1	White	150020	PP	250x159x70	1750	1x220
7	161150	Take-Away Tray	2	Black	150021	PP/MIN	250x159x45	700/400	1x246
8	155055	Take-Away Tray	2	White	150021	PP	250x159x45	700/400	1x246
9	161151	Take-Away Tray	3	Black	150022	PP/MIN	250x159x48	550/350/200	1x246
10	155056	Take-Away Tray	3	White	150022	PP	250x159x48	550/350/200	1x246
11	154755	Take-Away Tray	5	Black	155621	PP	250x159x46	85/115/180/270/290	1x240
12	161164	Small Take-Away Tray	1	Black	161171	PP/MIN	215x148x41	900	1x336
13	161165	Small Take-Away Tray	2	Black	161172	PP/MIN	215x148x47	500/400	1x332

*No. 1-6 DF15/DF25 cassette, 165911 (2 cav.) also available.

No. 7-8 DF15/DF25 cassette, 182975 (2 cav.) also available.

No. 9-10 DF15/DF25 cassette, 173050 (2 cav.) also available.

No. 12 DF15/DF25 cassette, 165913 (2 cav.) also available.

No. 13 DF15/25 cassette, 173051 (2 cav.) also available.



APET LID FOR TAKE-AWAY TRAYS



1

Material: APET -40°C to +70°C

Temp (Time): +70°C (2h), +40°C (10days), -40°C (unlimited)

No	Article	Description	Colour	Size LxWxH (mm)	Qty/Cart.
1	155620	Lid for Take-Away Trays	Transparent	256x163x12	1x246





PP HMR TRAYS

Material: PP -20°C to +120°C
 Temp (Time): +120°C (1h), +100°C (2h), +70°C (2h),
 +40°C (10days), -20°C (unlimited)



No.	Article	Description	Comp	Colour	Cassette DF10/20*	Size (mm) LxWxH	Vol (ml)	Qty/ Cart.
1	171000	HMR Tray	1	Black	140156	215x148x40	840	1x328
2	171001	HMR Tray	1	White	140156	215x148x40	840	1x328
3	196520	HMR Tray	1	Transparent	140156	215x148x40	840	1x328
4	171002	HMR Tray	1	Black	140156	215x148x50	1035	1x312
5	171003	HMR Tray	1	White	140156	215x148x50	1035	1x312
6	196519	HMR Tray	1	Transparent	140156	215x148x50	1035	1x312
7	171004	HMR Tray	1	Black	140156	215x148x70	1395	1x232
8	171005	HMR Tray	2	Black	140155	215x148x50	540/400	1x312
9	171006	HMR Tray	2	White	140155	215x148x50	540/400	1x312

* No. 1-7 DF15/DF25 cassette, 152415 (2 cav.), also available.
 No. 8-9 DF15/25 cassette, 172698 (2 cav.), also available.



1



2



3



4



5



6



7



8



9

APET LID FOR HMR TRAYS

Material: APET -40°C to +70°C
 Temp (Time): +70°C (2h), +40°C (10days), -40°C (unlimited)



No.	Article	Description	Colour	Size LxWxH (mm)	Qty/Cart.
1	175050	Lid for HMR Trays	Transparent	221x154x14	1x312



1

PP CATER LINE TRAYS

Material: PP -20°C to +120°C
 Temp (Time): +120°C (1h), +100°C (2h), +70°C (4h),
 +40°C (10days), -20°C (unlimited)



No.	Article	Description	Comp	Colour	Cassette DF10/20*	Size (mm) LxWxH	Vol (ml)	Qty/ Cart.
1	162146	Cater Line Tray	1	Black	140162	227x178x32	920	1x216
2	159179	Cater Line Tray	1	White	140162	227x178x32	920	1x216
3	162150	Cater Line Tray	1	Black	140162	227x178x40	1115	1x216
4	162153	Cater Line Tray	1	White	140162	227x178x40	1115	1x216
5	160063	Cater Line Tray	1	Black	140162	227x178x50	1345	1x216
6	162343	Cater Line Tray	1	White	140162	227x178x50	1345	1x216
7	162147	Cater Line Tray	2	Black	159176	227x178x32	440/370	1x216
8	159180	Cater Line Tray	2	White	159176	227x178x32	440/370	1x216
9	162151	Cater Line Tray	2	Black	159176	227x178x40	550/480	1x216
10	162154	Cater Line Tray	2	White	159176	227x178x40	550/480	1x216
11	160064	Cater Line Tray	2	Black	159176	227x178x50	645/540	1x216
12	162344	Cater Line Tray	2	White	159176	227x178x50	645/540	1x216
13	162303	Cater Line Tray	3	Black	159177	227x178x32	350/225/170	1x216
14	159178	Cater Line Tray	3	White	159177	227x178x32	350/225/170	1x216
15	162152	Cater Line Tray	3	Black	159177	227x178x40	445/280/205	1x216
16	162155	Cater Line Tray	3	White	159177	227x178x40	445/280/205	1x216
17	160065	Cater Line Tray	3	Black	159177	227x178x50	530/325/235	1x216
18	162345	Cater Line Tray	3	White	159177	227x178x50	530/325/235	1x216

*No. 1-6 DF15/DF25 cassette, 153432 (2 cav.), also available
 No. 7-12 DF15/DF25 cassette, 163449 (2 cav.), also available
 No. 13-18 DF15/DF25 cassette, 163450 (2 cav.), also available



APET LID FOR CATER LINE TRAYS

Material: APET -40°C to +70°C, PP -20°C to +120°C
 Temp (Time): APET +70°C (2h), +40°C (10days), PP 120°C (1h),
 +100°C (2h), +70°C (4h), +40°C (10days)



No.	Article	Description	Material	Colour	Size (mm) LxWxH	Qty/ Cart.
1	171200	Lid for Cater Line Trays	APET	Transparent	232x183x16	1x372
2	185994	Lid for Cater Line Trays	PP	Transparent	240x190x20	1x126



PP 1/4 GN MENU TRAYS

Material: PP -20°C to +120°C.

Temp (Time): +120°C <60min, +100°C <30min, +70°C <240min, +40°C <10days

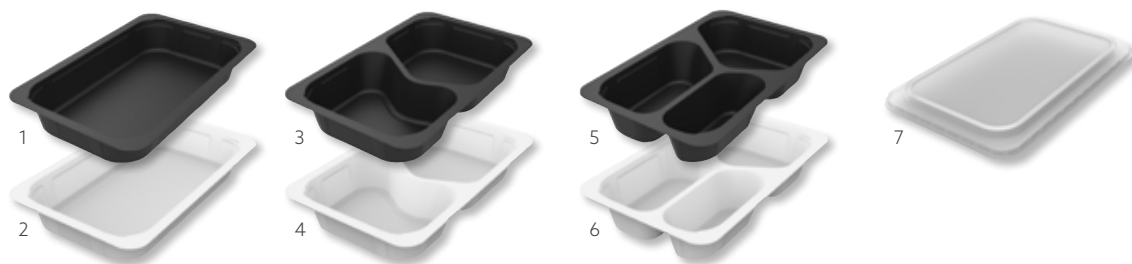


No.	Article	Description	Comp	Colour	Cassette DF10/20*	Size LxWxH (mm)	Vol (ml)	Qty/Cart.
1	181900	1/4 GN Menu Tray	1	Black	140149	263x161x40	1165	1x225
2	181901	1/4 GN Menu Tray	1	White	140149	263x161x40	1165	1x225
3	181902	1/4 GN Menu Tray	2	Black	140150	263x161x43	630/490	1x225
4	181903	1/4 GN Menu Tray	2	White	140150	263x161x43	630/490	1x225
5	181904	1/4 GN Menu Tray	3	Black	140151	263x161x45	5490/370/200	1x225
6	181905	1/4 GN Menu Tray	3	White	140151	263x161x45	490/370/200	1x225
7	181906	Lid for 1/4 GN Menu Trays	-	Transparent	-	272x173	-	1x225

*No. 1-2 DF15/25 cassette, 152407 (2 cav.), also available

*No. 3-4 DF15/25 cassette, 152408 (2 cav.), also available

*No. 5-6-DF15/25 cassette, 152406 (2 cav.), also available



PP/MINERAL BOWLS

- Handles to prevent burned hands

Material: PP/MIN -20°C to +120°C

PP: -20°C to +120°C

Temp (Time): +120°C (1h), +70°C (4h), +40°C (10days), -20°C (unlimited)



No.	Article	Description	Colour	Material	Cassette DF10/20*	Size(mm) LxWxH	Vol (ml)	Qty/ Cart.
1	177907	Bowl	Black	PP/MIN	148354	153x153x45	350	1x480
2	177908	Bowl	Black	PP/MIN	148354	153x153x60	500	1x480
3	177909	Bowl	Black	PP/MIN	148354	153x153x70	650	1x480
4	177910	Lid for bowls	Transparent	PP	-	159x159x22	-	1x480

* DF15/DF25 cassette, 168939 (2 cav.), also available



APET BAGUETTE TRAY

Material: APET -40°C to +70°C

Temp (Time): +70°C (2h), +40°C (10days), -40°C (unlimited)



No.	Article	Description	Comp	Colour	Cassette DF10/20*	Size (mm) LxWxH	Vol (ml)	Qty/ Cart.
1	112060	Baguette Tray	1	Transparent	140157	260x110x68	1150	5x70

*DF15/DF25 cassette, 152414 (3 cav.), also available



PP SIDE DISH TRAYS

Material: PP -20°C to +120°C
 Temp (Time): +120°C (1h), +70°C (4h), +40°C (10days), -20°C (unlimited)



No.	Article	Description	Comp	Colour	Cassette DF10/20	Size LxWxH (mm)	Vol (ml)	Qty/Cart.
1	758512	Side Dish Tray	1	Black	140152 (2 cav.)*	138x114x35	350	1x300
2	758510	Side Dish Tray	1	White	140152 (2 cav.)*	138x114x35	350	1x300
3	758516	Side Dish Tray	1	Transparent	140152 (2 cav.)*	138x114x35	350	1x300
4	758002	Side Dish Tray	1	Black	140152 (2 cav.)*	138x114x53	470	1x300
5	758000	Side Dish Tray	1	White	140152 (2 cav.)*	138x114x53	470	1x300
6	758006	Side Dish Tray	1	Transparent	140152 (2 cav.)*	138x114x53	470	1x300
7	758602	Side Dish Tray	1	Black	140152 (2 cav.)*	138x114x70	630	1x276
8	758601	Side Dish Tray	1	White	140152 (2 cav.)*	138x114x70	630	1x276
9	758606	Side Dish Tray	1	Transparent	140152 (2 cav.)*	138x114x70	630	1x276
10	757502	Side Dish Tray	2	Black	140153 (2 cav.)	138x114x53	220/140	1x480
11	757501	Side Dish Tray	2	White	140153 (2 cav.)	138x114x53	220/140	1x480
12	757506	Side Dish Tray	2	Transparent	140153 (2 cav.)	138x114x53	220/140	1x480
13	182376	Lid for side dish tray		Transparent	-	140x122	-	1x900

* No. 1-9 DF15/DF25 cassette, 152411 (4 cav.), also available.



PP 1/6 & 1/4 GN TRAYS

Material: PP -20°C to +120°C
 Temp (Time): +120°C (1h), +100°C (2h), +70°C (2h),
 +40°C (10days), -20°C (unlimited)



No.	Article	Description	Colour	Cassette DF15/25*	Size LxWxH (mm)	Vol (ml)	Qty/Cart.
1	171807	1/6 GN Tray	Black	171941 (2 cav.)	176x162x60	1000	1x318
2	171808	1/6 GN Tray	Black	171941 (2 cav.)	176x162x100	1600	1x300
3	152345	1/4 GN Tray	Black	DF15 168940 / DF25 147611 (2 cav.)	265x161x60	1650	1x200
4	152344	1/4 GN Tray	White	DF15 168940 / DF25 147611 (2 cav.)	265x161x60	1650	1x200
5	115580	1/4 GN Tray	Black	DF15 168940 / DF25 147611 (2 cav.)	265x161x80	2000	1x200
6	117100	1/4 GN Tray	Black	DF15 168940 / DF25 147611 (2 cav.)	265x161x100	2600	1x192
7	740102	1/4 GN Tray	Black	152407 (2 cav.)	265x162x50	1500	1x200
8	740100	1/4 GN Tray	White	152407 (2 cav.)	265x162x50	1500	1x200
9	740202	1/4 GN Tray	Black	152407 (2 cav.)	265x162x70	2000	1x150
10	740200	1/4 GN Tray	White	152407 (2 cav.)	265x162x70	2000	1x150
11	150260	1/4 GN Tray	Transparent	152407 (2 cav.)	265x162x70	2000	1x150

* No. 1 DF10/20 cassette, 171940, also available
 No. 2 DF10 cassette, 171940, also available
 No. 3-4 DF10/20 cassette, 147609, also available
 No. 5-6 DF10 cassette, 147609, also available
 No. 7-11 DF10/20 cassette, 140149, also available



PP 1/1, 1/2 & 1/3 GN TRAYS

Material: PP -20°C to +120°C
 PP/MIN -20°C to +120°C
 Temp (Time): +120°C (1h), +70°C (2h), +40°C (10days), -20°C (unlimited)



No.	Article	Description	Comp	Colour	Cassette DF15/25	Material	Size LxWxH (mm)	Vol (ml)	Qty/Cart.
1	166879	1/3 GN Tray	1	Black	150023	PP	325x176x65	2500	1x144
2	142529	1/3 GN Tray	1	White	150023	PP	325x176x65	2500	1x144
3	133726	1/2 GN Tray	1	Black	141550	PP	325x265x40	2700	1x100
4	114040	1/2 GN Tray	1	White	141550	PP	325x265x40	2700	1x100
5	168629	1/2 GN Tray	1	Black	141550	PP	325x265x50	3400	1x100
6	114050	1/2 GN Tray	1	White	141550	PP	325x265x50	3400	1x100
7	161152	1/2 GN Tray	1	Black	141550	PP/MIN	325x265x60	4000	1x100
8	114060	1/2 GN Tray	1	White	141550	PP	325x265x60	4000	1x100
9	115543	1/2 GN Tray	1	Black	141550	PP	325x265x80	5000	1x96
10	114080	1/2 GN Tray	1	White	141550	PP	325x265x80	5000	1x96
11	115544	1/2 GN Tray	1	Black	141550	PP	325x265x100	6300	1x92
12	114100	1/2 GN Tray	1	White	141550	PP	325x265x100	6300	1x92
13	171654	1/2 GN Tray	2	Black	141550	PP	325x265x50	2x1600	1x100
14	166027	1/1 GN Tray	1	Black	Not sealable	PP	530x325x60	8175	1x48





APET LIDS FOR 1/1 & 1/2 GN TRAYS

Material: APET -40°C to +70°C

Temp (Time): +70°C (2h), +40°C (10days), -40°C (unlimited)

No.	Article	Description	Colour	Size (mm) LxWxH	Qty/ Cart.
1	160801	Lid for 1/2 GN Trays	Transparent	325x266	1x60
2	166026	Lid for 1/1 GN Tray	Transparent	530x325	1x32





CPET (RECYCLED) 1/3 & 1/2 GN TRAYS

Material: CPET -40°C to +220°C

Temp (Time): +220°C (2h), +70°C (4h), +40°C (10days), -40°C (unlimited)

BioPak
It doesn't cost the earth



No.	Article	Description	Colour	Cassette DF15/25	Size LxWxH (mm)	Vol (ml)	Qty/Cart.
1	171806*	1/3 GN Tray	Black	187025	325x176x60	2400	1x174
2	115511	1/2 GN Tray	Black	141550	325x265x50	3350	1x90
3	159586*	1/2 GN Tray	White	141550	325x265x50	3350	1x116
4	176602*	1/2 GN Tray	White	141550	325x265x60	3900	1x124
5	131280*	1/2 GN Tray	Black	141550	325x265x79	5100	1x80
6	103726*	1/2 GN Tray	White	141550	325x265x79	5100	1x80

* 100% recycled material



1



2



3



4



5



6

FILMS THAT PROMOTE YOUR BUSINESS

If you want to make your food look delicious, encourage impulse purchases and ensure a leak-free, secure fit, Duniform® films tick the boxes. You can choose between Biobased, PP, PET and Universal films. These are crystal clear and can be specified to prevent fogging. Even better, we can personalise them for your business - making your packaging a powerful promotional tool.

	<p>MAXIMISE ON-SHELF IMPACT</p>	
		<p>SEAL SECURELY, PEAL EASILY</p>
<p>PERSONALISE YOUR FILM</p>		

In today's globalised world, there is a growing demand for individualisation. Customising films offers a simple, cost-effective way to meet this need - and build your brand. Our customisation team can organise this for you.

SEALING FILM FOR MENU FIBRE TRAYS



No	Article	Cooking temp. max °C	Sealing temp.	DF 10	DF 20	DF 15/25	DF 22	DF 32	DF 36	DF 44	DF 46	Thickness (µm)	Size (mm x m)	Qty/ Cart.
1	196585	220 (60min)	110-140°C	•	•	•	•	-	-	-	-	30	185x400	1
2	196586	220 (60min)	110-140°C	-	-	•	-	•	-	-	-	30	272x400	1

SEALING FILM FOR PP TRAYS



No.	Article	Cooking temp. max °C	Sealing temp.	DF 10	DF 20	DF 15/25	DF 22	DF 32	DF 36	DF 44	DF 46	Thickness µm	Size mm x m	Roll Ø mm	Qty/ Cart.
1	147974	100 (30min)	150 - 180°C	•	•	•	•	-	-	-	-	60	154x250	174	1
2	147975	100 (30min)	150 - 180°C	•	•	•	•	-	-	-	-	60	172x250	174	1
3	147910	100 (30min)	150 - 180°C	•	•	•	•	-	-	-	-	60	185x250	174	1
4	108078	100 (30min)	150 - 180°C	-	-	•*	•	•	-	-	-	60	230x500	227	1
5	107074	100 (30min)	150 - 180°C	-	-	•*	-	•	-	-	-	60	272x500	227	1
6	107075	100 (30min)	150 - 180°C	-	-	-	-	•	•	•	•	60	340x500	227	1
7	107073	100 (30min)	150 - 180°C	-	-	-	-	•	•	•	•	60	380x500	227	1
8	191010	100 (30min)	150 - 180°C	-	-	-	-	•	•	•	•	60	390x500	227	1
9	151548	100 (30min)	150 - 180°C	-	-	-	-	-	-	•	•	60	415x500	227	1

* Only with spike roll

SEALING FILM FOR PET TRAYS



No.	Article	Cooking temp. max °C	Sealing temp.	DF 10	DF 20	DF 15/25	DF 22	DF 32	DF 36	DF 44	DF 46	Thickness µm	Size mm x m	Roll Ø mm	Qty/ Cart.
1	162792	210 (30min)	160 - 250°C	•	•	•	•	-	-	-	-	40	115x400	175	1
2	162800	210 (30min)	160 - 250°C	•	•	•	•	-	-	-	-	40	185x400	175	1
3	162801	210 (30min)	160 - 250°C	-	-	•	•	•	-	-	-	40	240x400	175	1
4	162802	210 (30min)	160 - 250°C	-	-	•	-	•	-	-	-	40	272x400	175	1
5	162804	210 (30min)	160 - 250°C	-	-	-	-	•	•	•	•	40	340x400	175	1
6	162805	210 (30min)	160 - 250°C	-	-	-	-	•	•	•	•	40	380x400	175	1
7	162806	210 (30min)	160 - 250°C	-	-	-	-	•	•	•	•	40	390x400	175	1
8	162807	210 (30min)	160 - 250°C	-	-	-	-	-	-	•	•	40	410x400	175	1
9	162808	210 (30min)	160 - 250°C	-	-	-	-	-	-	•	•	40	446x400	175	1

UNIVERSAL SEALING FILM FOR PP/PET TRAYS



No.	Article	Cooking temp. max °C	Sealing temp.	DF 10	DF 20	DF 15/25	DF 22	DF 32	DF 36	DF 44	DF 46	Thickness µm	Size mm x m	Roll Ø mm	Qty/ Cart.
1	159847	180 (30min)	140 - 210°C	•	•	•	•	-	-	-	-	42	154x400	177	1
2	174553	180 (30min)	140 - 210°C	•	•	•	•	-	-	-	-	42	172x400	177	1
3	159848	180 (30min)	140 - 210°C	•	•	•	•	-	-	-	-	42	185x400	177	1
4	159849	180 (30min)	140 - 210°C	-	-	•	•	•	-	-	-	42	230x400	177	1
5	159850	180 (30min)	140 - 210°C	-	-	•	-	•	-	-	-	42	272x400	177	1
6	159851	180 (30min)	140 - 210°C	-	-	-	-	•	•	•	•	42	340x400	177	1
7	159843	180 (30min)	140 - 210°C	-	-	-	-	•	•	•	•	42	380x400	177	1
8	159844	180 (30min)	140 - 210°C	-	-	-	-	•	•	•	•	42	390x400	177	1
9	159845	180 (30min)	140 - 210°C	-	-	-	-	-	-	•	•	42	415x400	177	1
10	159846	180 (30min)	140 - 210°C	-	-	-	-	-	-	•	•	42	445x400	177	1

DF22/DF22F



DF25



DF20



DF15



DF10



DF5



A MACHINE FOR EVERY NEED

Our in-house team can help you choose the optimal Duniform® machine for your company. While each machine suits different businesses – from small delis to industrial-scale HMR firms – they are all designed with simplicity in mind. Whatever model you choose, the cassettes can be changed in moments.



FOR GLASSES

Serve sealed BioPak RPET glasses with speed and style.

DF32/DF32F



DF36



DF44



DF46



MANUAL

Simply lift and close the lid to seal your filled tray.



SEMI-AUTOMATIC

Place the filled tray in the cassette and the machine does the rest.



FULLY-AUTOMATIC

The machine winds the trays, and is capable of large volumes.

MACHINES

Duni offers a variety of machines in its Duniform® Sealing Concept. Whatever your requirements or budget, we are certain you will find the right sealing solution for your operation.



General Information	DF5	DF10	DF15	DF20	DF25	DF22	DF22F
Article number	700076	700080	163140	700095	700090	163141	164795
Machine weight	22 kg	13 kg	25 kg	20 kg	43 kg	30 kg	30 kg
Cassette weight	0,5 kg	0,5 kg	2,5 kg	0,5 kg	2,5 kg	1,0 kg	1,0 kg
Electrical data	220 V~, AC 50/60 Hz	230 V~, AC 50 Hz 10 A	230 V~, AC 50 Hz 10 A	230 V~, AC 50 Hz 10 A	230 V~, AC 50 Hz 10 A	230 V~, AC 50 Hz 10 A	230 V~, AC 50 Hz 10 A
Maximum power consumption	0,4 kW	0,7 kW	1,0 kW	0,75 kW	1 kW	0,8 kW	1,0 kW
Lengths of cable/ connection plug	2m/1-phase grounded	2,5 m / 1-phase grounded	2,5 m / 1-phase grounded	2,5 m / 1-phase grounded	2 - 3 m/1-phase grounded	2,0 m / 1-phase grounded	2,0 m / 1-phase grounded
Pressing force		930 N	930 N	1003 N	1003 N	1400 N	1400 N
Capacity	6-10 cycles/min	8 cycles/min	8 cycles/min	10 cycles/min	10 cycles/min	2 - 4 cycles/min	2 - 4 cycles/min
Start-up heating time	5-10 min	15 min	20 min	15 min	20 min	10 min	10 min
Dimensions	DF5	DF10	DF15	DF20	DF25	DF22	DF22F
Length	350 mm base	640 mm (with handle) 540 mm (base)	830 mm (with handle) 740 mm (base)	615 mm	760 mm	550 mm	550 mm
Width	360 mm	240 mm	560 mm	220 mm	355 mm	325 mm	325 mm
Height	610 mm	260 mm (closed) 500 mm (open)	270 mm (closed) 660 mm (open)	220 mm (closed) 520 mm (open)	350 mm (closed) 650 mm (open)	450 mm	450 mm
Trays/Film/Sealing	DF5	DF10	DF15	DF20	DF25	DF22	DF22F
Maximum sealable dimension (length x width x depth)	Ø 98 mm	265x175x100 mm (>¼ GN)	325x265x100 mm (½ GN)	265x175x70 mm (>¼ GN)	325x265x100 mm (½ GN)	230x280x100 mm (>¼ GN)	230x280x100 mm (>¼ GN)
Maximum film width	130 mm	185 mm	272 mm	185 mm	272 mm	240 mm	240 mm
Sealing temperature	max 200°C	max 210°C	max 210°C	max 190°C	max 180°C	max 210°C	max 210°C
Sealing technique	Semi-automatic	Manual	Manual	Semi-automatic	Semi-automatic	Semi-automatic	Semi-automatic
MAP - Modified Atmosphere Packaging	-	-	-	-	-	-	-
Vacuum chambers	-	-	-	-	-	-	-
Figure cutting	Yes	-	-	-	-	-	Yes



DF32	DF32F	DF36	DF44	DF46
160900	159788	191000	160901	163142
approx. 40 kg	approx. 40 kg	approx. 100 kg	approx. 190 kg	approx. 550 kg
approx. 1,5 – 2,5 kg	approx. 3 – 4 kg	approx. 3 – 4 kg	approx. 4 – 6 kg	approx. 3 – 5 kg
230 V~, AC 50/60 Hz	230 V~, AC 50/60 Hz	230 V~, AC 50/60 Hz	400 V~, AC 50/60 Hz	400 V~, AC 50/60 Hz
1,8 kW	1,8 kW	2,5 kW	4,3 kW	6,3 kW
2 m / 1-phase grounded	2 m / 1-phase grounded	1,5 m / 1-phase grounded	- / 3-phase grounded	- / 3-phase grounded
2000 N	2000 N	2000 N	7000 N	-
2 – 4 cycles/min	2 – 4 cycles/min	2 with MAP, 2 – 6 without MAP	3 with MAP, 2 – 6 without MAP	2-4 with MAP, 5-8 without MAP
10 min	10 min	10 min	20 min	10 min
DF32	DF32F	DF36	DF44	DF46
550 mm	550 mm	650 mm	970 mm	2580 mm
475 mm	475 mm	530 mm	675 mm	905 mm
450 mm	450 mm	625 mm	1570 mm	1640 mm
DF32	DF32F	DF36	DF44	DF46
380x280x100 mm (>½ GN)	370x275x100 mm (>½ GN)	360x270x100 mm (>½ GN)	430x315x95 mm (>½ GN)	360x270x100 mm (>½ GN)
390 mm	390 mm	390 mm	470 mm	446 mm
max 200°C	max 200°C	max 200°C	max 200°C	max 200°C
Semi- automatic	Semi- automatic	Semi- automatic	Semi- automatic	Automatic
-	-	Yes	Yes	Yes
-	-	1	1	1
-	Yes	Yes	Yes	Yes

DUNIFORM® DF5 SEALING MACHINE CONCEPT

Health is wealth. No wonder that today's consumers are opting for nutritious, hygienically-served food and drinks: smoothies, freshly squeezed juices, protein shakes and healthy snacks are extremely popular.

At the same time, customers everywhere are actively seeking solutions that are healthy for the future of the planet.

The new Duniform® DF5 concept lets you deliver the best of both worlds – while optimising hygiene, minimising waste and working with effortless efficiency.



Discover how to hygienically seal a delicious nutritious smoothie with the DF5.



**HYGIENICALLY SEALING IN
FRESHNESS AND AVOIDING
SPILLS IS GOOD FOR
CUSTOMERS AND BUSINESS.**





SWEET CUP

Material: BAGASSE/PLA: up to +100°C
PLA max +40°C

BioPak
It doesn't cost the earth



No.	Article	Description	OK Compost	Colour	Material	Volume (ml)	Qty./Cart.	DF5 Cassette
1	182533	Sweet Cup	*	Printed	Bagasse	350	18x50	191377
2	182534	Sweet Cup	*	Printed	Bagasse	470	25x36	191377
3	191668	Flat Lid with cross for 182533/182534		Transparent	PLA	-	12x75	-
4	191669	Dome Lid for with hole 182533/182534		Transparent	PLA	-	12x75	-
5	192157	Breeze Cup	*	Printed	Bagasse	350	18x50	191377
6	192158	Breeze Cup	*	Printed	Bagasse	470	25x36	191377
7	192159	Breeze Cup	*	Printed	Bagasse	590	25x36	191377



1 2 3 New 4 New 5 New 6 New 7 New

RPET CRYSTAL GLASSES

Material: RPET 70°C

BioPak
It doesn't cost the earth



No	Article	Description	Material	Colour	Volume (ml)	Size	Pcs/SKU	DF5 Cassette
1	188001	Crystal Glass	RPET	Transparent	270	-	16x60	191380
2	188002	Crystal Glass	RPET	Transparent	360	-	16x60	191380
3	188004	RPET Crystal Glass	RPET	Transparent	410 (0,3l)	-	16x50	191378
4	188005	RPET Crystal Glass	RPET	Transparent	470 (0,4l)	-	16x50	191378
5	188006	RPET Crystal Glass	RPET	Transparent	590 (0,5l)	-	16x50	191378
6	188003	Crystal Glass Insert to be sealed with 188004 - 188006	RPET	Transparent	120	-	16x30	191377
7	188014	Crystal Glass Insert for 188004 / 188005 / 188006	RPET	Transparent	250	-	16x50	191381
8	188013	Crystal Glass Insert to be sealed with 188004 - 188006	RPET	Transparent	180	-	16x30	191377
9	177998	RPET Flat Lid (w/o hole)	RPET	Transparent	-	-	20x50	-
10	188012	RPET Dome Lid (w hole)	RPET	Transparent	-	-	20x50	-



1 2 3 4 5 6 7 8 9 10

CARDBOARD/PLA BOWLS

Material: Cardboard/PLA max +100°C

BioPak
It doesn't cost the earth



1

No	Article	Description	Material	Size LxWxH (mm)	Volume (ml)	Qty/ Cart.	DF5 Cassette
1	170732	Cardboard Bowl	Cardb./PLA	90x90x62	250	8x50	191377

CARDBOARD BOWLS

Material: Cardboard/PP max +120°C (microwarmable)



1



2

No.	Article	Description	Material	Size (mm) LxWxH	Vol (ml)	Qty/ Cart.	DF5 Cassette
1	168006*	Soup Bowl	Cardboard/PP	91x91x85	355	20x25	191377
2	168007*	Soup Bowl	Cardboard/PP	97x97x99	485	24x40	191378

*Remove film before reheating in microwave



1



2



3



4



5

DELIPACK

Material: PP max +100°C (microwarmable)



No.	Article	Description	Size (mm) LxWxH	Vol (ml)	Qty/ Cart.	DF5 Cassette
1	156421*	Delipack Round	101x101x30	125	20x50	191382
2	156422*	Delipack Round	101x101x37	200	20x50	191382
3	156423*	Delipack Round	101x101x48	250	20x50	191382
4	156424*	Delipack Round	101x101x61	300	20x50	191382
5	156425*	Delipack Round	101x101x102	500	20x50	191382

*Remove film before reheating in microwave





DF5

- Small & compact
- Easy and fast

General Information

Article number	700076
Machine weight	22 kg
Cassette weight	0,5 kg
Electrical data	220 V~, AC 50/60 Hz
Maximum power consumption	0,4 kW
Lengths of cable / connection plug	2m/1-phase grounded
Pressing force	
Capacity	6-10 cycles/min
Start-up heating time	5-10 min

Trays/Film/Sealing

Maximum sealable glass dimension	Ø 98 mm
Maximum film width	130 mm
Sealing temperature	max 200°C
Sealing technique	Semi-automatic
Sealing film	188059

DF5 CASSETTES & FILM

No	Article	Description	Colour	Size (mm)	Qty./Cart.
1	191378	Cassette DF5 1-Cav	Black	Ø 92	1x1
2	191377	Cassette DF5 1-Cav	Red	Ø 85	1x1
3	191380	Cassette DF5 1-Cav	Blue	Ø 88	1x1
4	191381	Cassette DF5 1-Cav	Silver	Ø 90	1x1
5	191382	Cassette DF5 1-Cav	Green	Ø 96	1x1
6	188059	Sealing Film, 42 µ, 130 mm x 400 m	Transparent		1x1



STANDARD SIZES, STANDOUT STYLE

Duniform® trays come in elegant 'straight to the table' formats to suit all types of frozen, chilled and warm food. They also offer a wide variety of GN compartment sizes, giving you full control over volumes, costs and end-user experience. The icing on the cake? They are designed for convenient stackability and transport too.



OPTIMISE
CONVENIENCE AND
COST-MANAGEMENT



1. Put the filled tray in the cassettes / machine.

2. Pull the film with two hands over the tray.

3. Push the lid of the machine down until it starts to seal.

4. The machine opens automatically once the tray is sealed (except manual machines DF10/15).



DF10

- Small & compact
- Easy and fast

General Information	
Article number	700080
Machine weight	13 kg
Cassette weight	0,5 kg
Electrical data	230 V~, AC 50 Hz 10 A
Maximum power consumption	0,7 kW
Lengths of cable / connection plug	2,5 m / 1-phase grounded
Pressing force	930 N
Capacity	8 cycles/min
Start-up heating time	15 min
Trays/Film/Sealing	
Maximum sealable tray dimension	265 x 175 x 100 mm (>¼ GN)
Maximum film width	185 mm
Sealing temperature	max 210°C
Sealing technique	Manual
Accessories	
Spike Roll DF10	155198
Trolley	887120

DF15

- Seals sizes up to 1/2 GN
- Easy & fast

General Information	
Article number	163140
Machine weight	25 kg
Cassette weight	2,5 kg
Electrical data	230 V~, AC 50 Hz 10 A
Maximum power consumption	1,0 kW
Lengths of cable / connection plug	2,5 m / 1-phase grounded
Pressing force	930 N
Capacity	8 cycles/min
Start-up heating time	20 min
Trays/Film/Sealing	
Maximum sealable tray dimension	325 x 265 x 100 mm (½ GN)
Maximum film width	272 mm
Sealing temperature	max 210°C
Sealing technique	Manual
Accessories	
Adapter for DF20/10 Cassettes	141549
Spike Roll DF15	166799
Trolley	887120





DF20

- Semi-automatic
- Light and robust
- Digital display

General Information

Article number	700095
Machine weight	20 kg
Cassette weight	0,5 kg
Electrical data	230 V~, AC 50 Hz 10 A
Maximum power consumption	0,75 kW
Lengths of cable / connection plug	2,5 m / 1-phase grounded
Pressing force	1003 N
Capacity	10 cycles/min
Start-up heating time	15 min

Trays/Film/Sealing

Maximum sealable tray dimension	265 x 175 x 70 mm (>¼ GN)
Maximum film width	185 mm
Sealing temperature	max 190°C
Sealing technique	Semi-automatic

Accessories

Cassette Rack DF20	102014
Spike Roll DF20	102903
Trolley	887120

DF25

- Seals sizes up to 1/2 GN
- Robust
- Semi-automatic

General Information

Article number	700090
Machine weight	43 kg
Cassette weight	2,5 kg
Electrical data	230 V~, AC 50 Hz 10 A
Maximum power consumption	1,0 kW
Lengths of cable / connection plug	2-3 m / 1-phase grounded
Pressing force	1003 N
Capacity	10 cycles/min
Start-up heating time	20 min

Trays/Film/Sealing

Maximum sealable tray dimension	325 x 265 x 100 mm (½ GN)
Maximum film width	272 mm
Sealing temperature	max 190°C
Sealing technique	Semi-automatic

Accessories

Adapter for DF20/10 Cassettes	141549
Spike Roll DF25	108824
Trolley	887100





DF22/22F

- Small & compact
- Semi-automatic
- Figure cutting available

General Information

Article number	163141/164795
Machine weight	30 kg
Cassette weight	1,0 kg
Electrical data	230 V~, AC 50 Hz 10 A
Maximum power consumption	0,8 kW
Lengths of cable / connection plug	2,0 m / 1-phase grounded
Pressing force	1400 N
Capacity	2-4 cycles/min
Start-up heating time	10 min

Trays/Film/Sealing

Maximum sealable tray dimension	230 x 280 x 100 mm (>¼ GN)
Maximum film width	240 mm
Sealing temperature	max 210°C
Sealing technique	Semi-automatic
Figure cutting	Yes (164795)

Accessories

Spike Roll DF22/22F	168744
Trolley	887100
Trolley	161965

DF32/32F

- Seals sizes larger than 1/2 GN
- Small & compact
- Figure cutting available

General Information

Article number	160900/159788
Machine weight	approx. 40 kg
Cassette weight	2-3 kg
Electrical data	1/N/PE 230 V~, AC 50/60 Hz
Maximum power consumption	1,8 kW
Lengths of cable / connection plug	2 m / 1-phase grounded
Pressing force	2000 N
Capacity	2-3 cycles/min
Start-up heating time	10 min

Trays/Film/Sealing

Maximum sealable tray dimension	380 x 280 x 100 mm (>½ GN)
Maximum film width	390 mm
Sealing temperature	max 200°C
Sealing technique	Semi-automatic
Figure cutting	Yes (159788)

Accessories

Spike Roll DF32/32F	164020
Trolley	887120
Trolley	161965





DF36

- Compact & robust
- Figure cutting
- Programmable cycles
- MAP

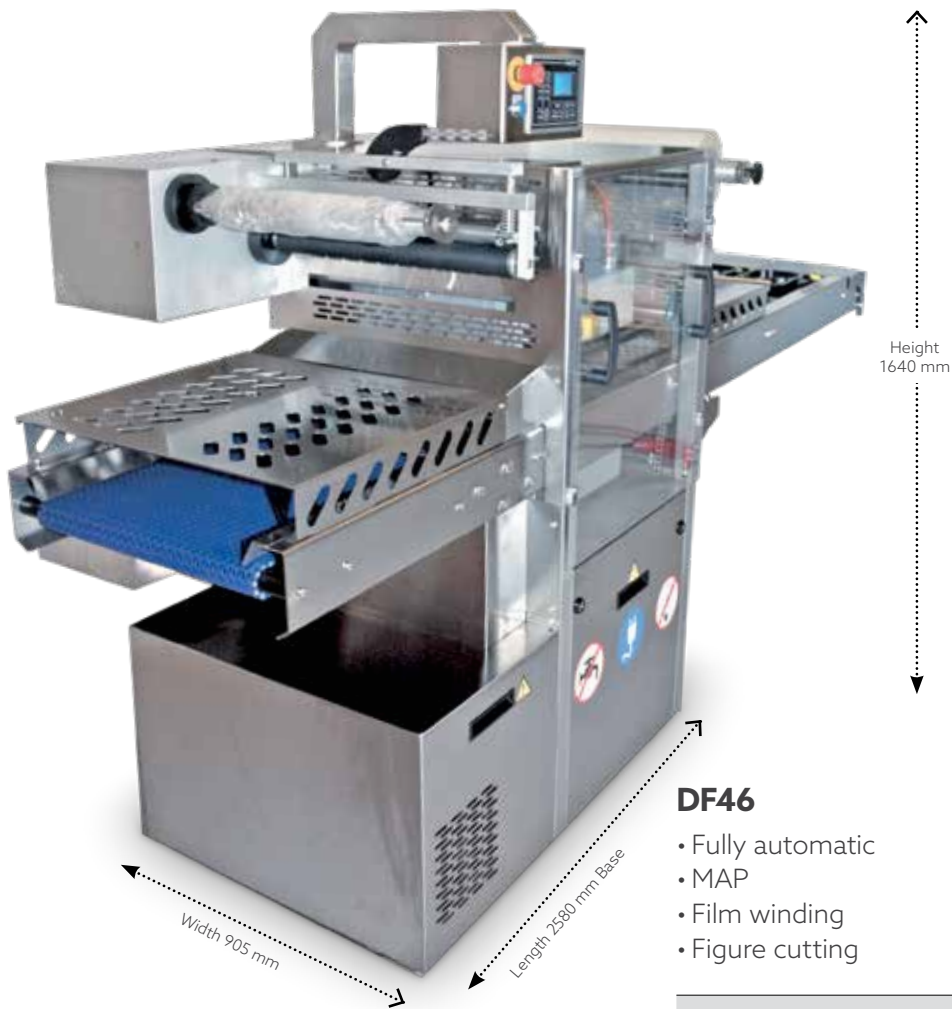
General Information	
Article number	191000
Machine weight	approx. 100 kg
Cassette weight	3- 4 kg
Electrical data	1/N/PE 230 V~, AC - 50/60 Hz
Maximum power consumption	2,5 kW
Lengths of cable / connection plug	1,5 m / 1-phased grounded
Pressing force	2000 N
Capacity	2 with MAP, 2 - 6 without MAP
Start-up heating time	10 min
Trays/Film/Sealing	
Maximum sealable tray dimension	360 x 270 x 100 mm (>½ GN)
Maximum film width	390 mm
Sealing temperature	max 200°C
Sealing technique	Semi-automatic
Vacuum chambers	1
Figure cutting	Yes
Accessories	
Spike Roll DF36	168744
Vacuum Pump 20m³/h	166472
Trolley	887100
Trolley	161965



DF44

- MAP
- Robust
- Automatic film winding
- Figure cutting

General Information	
Article number	160901
Machine weight	approx. 190 kg
Cassette weight	4-6 kg
Electrical data	3/N/PE 400 V~, AC - 50/60 Hz
Maximum power consumption	4,3 kW
Lengths of cable / connection plug	- / 3-phase
Pressing force	7000 N
Capacity	3 with MAP, 2 - 6 without MAP
Start-up heating time	20 min
Trays/Film/Sealing	
Maximum sealable tray dimension	430 x 315 x 95 mm (>½ GN)
Maximum film width	470 mm
Sealing temperature	max 200°C
Sealing technique	Semi-automatic
MAP - Modified Atmosphere Packaging	Yes
Vacuum chambers	1
Figure cutting	Yes
Accessories	
Spike Roll DF44	164020
Compressor	152556
High Oxygen Vacuum Pump 40 m³/h	166473
High Oxygen Vacuum Pump 60 m³/h	166474
Food Filter DF44	168631



DF46

- Fully automatic
- MAP
- Film winding
- Figure cutting

General Information

Article number	163142
Machine weight	approx. 550 kg
Cassette weight	3 - 5 kg
Electrical data	400 V~, AC- 50/60 Hz
Maximum power consumption	6,3 kW
Lengths of cable / connection plug	- / 3-phase grounded
Pressing force	-
Capacity	2-4 with MAP, 5- 8 without MAP
Start-up heating time	10 min

Trays/Film/Sealing

Maximum sealable tray dimension	360 x 270 x 100 mm (>½ GN)
Maximum film width	446 mm
Sealing temperature	max 200°C
Sealing technique	Automatic
MAP - Modified Atmosphere Packaging	Yes
Vacuum chambers	1
Figure cutting	Yes

Accessories

Spike Roll DF46	167331
High Oxygene Vacuum Pump 40 m³/h	166473
Food Filter DF46	168632
Tray Rails (for two cavities)	164723



THERMO BAGS

- Maintains food temperature
- Can be loaded from the side or from the top
- Can be connected on top of each other with buckles



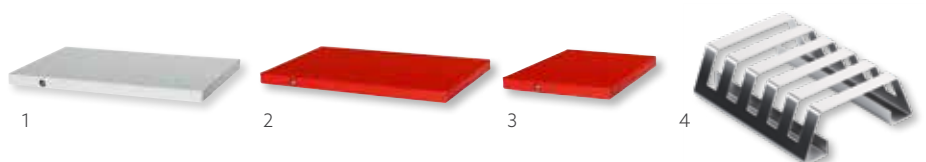
No.	Article	Description	Comp	Benefits	Buckles	Size (mm) LxWxH	Qty/ Cart.
1	163086	Thermo Bag	1	2 ¼ GN Tray	Yes	290x200x100	5x1
2	163085	Thermo Bag	1	Economy 5 ¼ GN Tray	No	275x200x240	5x1
3	163087	Thermo Bag	1	5 ¼ GN Tray	Yes	275x200x240	5x1
4	163088	Thermo Bag	1	Medium	No	310x240x260	5x1
5	163089	Thermo Bag	1	Large	No	420x200x260	5x1



TEMPERATURE CONTROL EQUIPMENT

- For improved temperature control
- Fits into thermo bag lids

No	Article	Description	Colour	Material	Size LxWxH (mm)	Pack
1	149403	Cooling Plate ¼ GN	White	Aluminium	164x265x15	5x1
2	153490	Heating Plate 1/4 GN	Red	Aluminium	164x265x15	5x1
3	157530	Small Heating Plate	Red	Aluminium	155x155x15	5x1
4	160542	Stand for Heating Plate	-	Aluminium	180x145x52	1x1





THERMO BOXES

- Maintains food temperature
- Washable for easy cleaning



No.	Article	Comp	Description	Material	Benefits	Size (mm) LxWxH	Qty/ Cart.
1	185160	1	Thermo Box	EPP	Single Portion	110x230x325	6x1
2	161169	1	Thermo Box	EPP	¼ GN	660x400x300	1x1
3	161170	1	Thermo Box	EPP	½ GN	450x330x300	1x1
4	113500	3	Thermo Box	EPP	Single Portion	400x325x110	6x1
5	751500	3	Thermo Box	EPP	Single Portion	455x320x105	5x1
6	164669	1	Thermo Box	EPP	Single Portion	325x255x327	1x1



TROLLEYS

No.	Article	Description	Size LxWxH (mm)	Qty/Cart.
1	887100	Trolley Stand	900x650x670	1x1
2	161965	Trolley	600x600x800	1x1
3	887120	Trolley Stand	600x400x800	1x1



WHAT IS A CARBON FOOTPRINT?

Carbon footprint is used to describe the climate impact of a product over its entire life cycle. A calculation is made based on the type of material of the product, the energy used in manufacturing, transport, use phase and end-of-life handling.

The carbon footprint should be used with care since it is a simplified study of a complex reality. It does not describe the problem of plastics in the sea or use of chemicals and is dependent on facts like type of energy used and waste handling infrastructure.

A plant-based product may theoretically reach a zero carbon footprint when only renewable energy is used in the chain. A fossil-based plastic does not have this potential.

PRODUCTS

For packaging material the carbon footprint of the product is consistently lower than for the goods they protect. For plastic products, the transport is typically less than 10-15 % of the overall footprint, also when shipped from China to Europe.

Calculations show that for Duni products for the same use, bagasse and paper products have the lowest carbon footprint.

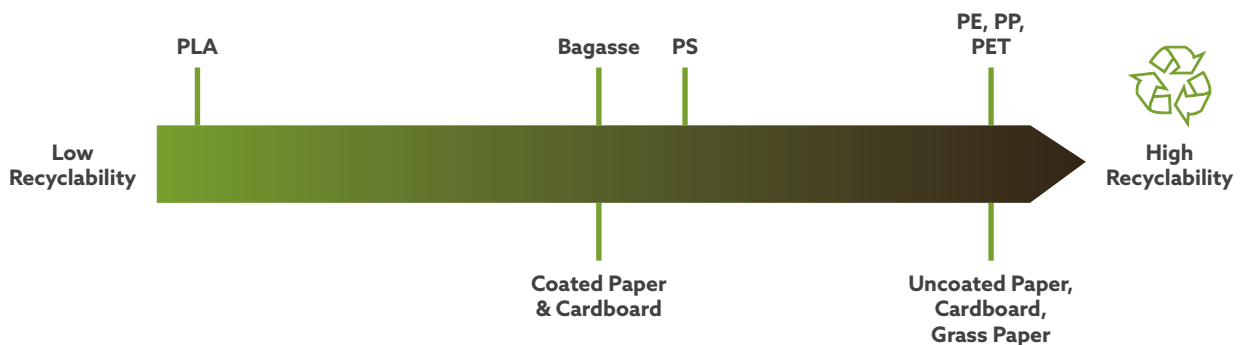
RESEARCH BASED

There are numerous studies that calculate the carbon footprint according to the ISO standard ISO 14044. There are databases to give the average findings of these studies. The numbers shown are calculated by an environmental consultant, Southpole.

Carbon dioxide emissions from a Duni product life cycle are typically divided into:



Recyclability of Duni materials:



DISCOVER OUR NEW CARBON FOOTPRINT TOOL

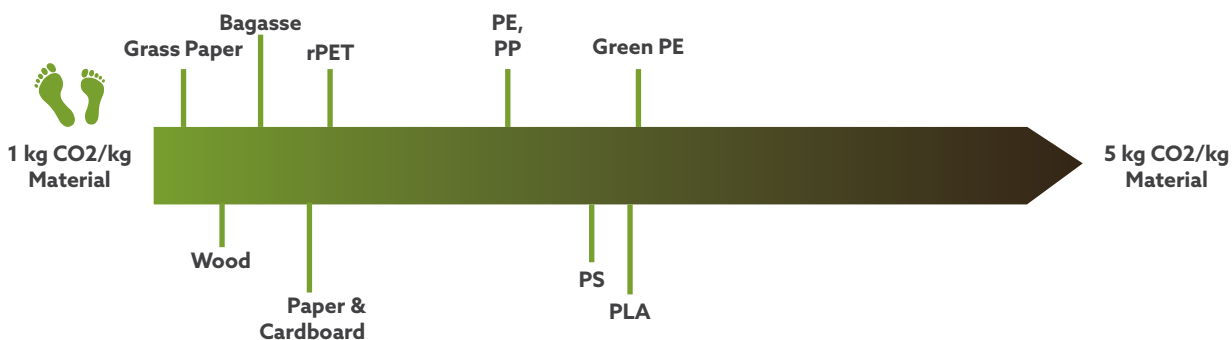
For more than a decade we have been constantly improving our offer of more sustainable packaging, with the goal of lowering our carbon footprint. We are focused on the larger picture of a product's life cycle. Part of the focus will be on developing the material of the product, plant-based alternatives and resource efficiency, for example. The other part of the focus will be on different end-of-life options, composting is an example when it's a relevant alternative. We are constantly looking for new ways to improve and innovate the full life cycle of our products so that the beginning and end of the life cycle are in line with more sustainable solutions.

We help you with the calculation of your carbon footprint for your take-away packaging choice, also considering different end-of-life options depending on different recycling streams in your country.

Get in contact with us if you would like help with figures to be used in communication with your customers.



Carbon Footprint of Duni materials:





MATERIALS GUIDE

Different materials suit different needs. This guide will help you to make the right choice for your business.

SYMBOL	NAME	TEMPERATURE*	DESCRIPTION OF MATERIAL	RECYCLING/DISPOSAL
	Woodfibre	-4°C to +100°C	Sugar cane fiber by-product	Compostable EN13432 or recycle as Carton/Paper
	Bioplastic	-20°C to +120°C	Bioplastic from sugar and natural waxes	Recycle as Plastics
	-	-4°C to +100°C	Bioplastic from plant starch, crystalline polylactic acid	Compostable EN13432 (cutlery ASTM D6400 and ASTM D6868) or recycle as Plastics
	-	0°C to +90°C	Mix of locally harvested grass and forest fiber.	Recycle as Paper Packaging
	-	-4°C to +40°C	Virgin plastic, polybutylene succinate	Compostable EN13432 or recycle as Plastics
	-	-4°C to +40°C	Bioplastic from plant starch, polylactic acid	Compostable EN13432 or recycle as Plastics
	RPET	-40°C to +70°C	Up to 100 % recycled PET, min 20 % virgin plastic	Recycle as Plastics
	-	-40°C to +250°C	Aluminium	Recycle as Metal
	APET	-40°C to +70°C	Virgin plastic, amorphous poly(ethylene terephthalate)	Recycle as Plastics
	Cardboard	-20°C to +100°C	Cardboard from forest fiber	Recycle as Paper/Carton
	CPET	-40°C to +220°C	Virgin plastic, crystalline poly(ethylene terephthalate)	Recycle as Plastics
	-	-4°C to +100°C	Virgin plastic, polyethene	Recycle as Plastics
	-	-4°C to +100°C	Virgin plastic, polyethene	Recycle as Plastics
	Mineral plastic	-20°C to +120°C	Virgin plastic, polypropene with chalk or talcum	Recycle as Plastics
	-	-20°C to +100°C	Paper from forest fiber	Recycle as Paper/Carton
	PP	-20°C to +120°C	Virgin plastic, polypropene	Recycle as Plastics
	PS/EPS	-4°C to +100°C	Virgin plastic, polystyrene / expanded polystyrene	Recycle as Plastics

THE LIFECYCLE OF A DUNI PRODUCT

The life of a Duni product starts with the choice of material. We prefer renewable raw materials from trees and plants, which are responsibly grown and sourced. Leftover materials such as sugarcane fibres or recycled plastics are also a great way to upcycle and save resources.

Conscious convenience is a good reason to choose and use Duni products. We work hard to ensure good working conditions and limited environmental impact at our own and our suppliers' manufacturing sites.

At the end of their life, Duni products should be recycled, composted or incinerated for energy efficiency. Littering is never an alternative and landfill should be avoided. We strive to enable good waste handling alternatives of our products.



To discover more about **OUR BLUE MISSION**, visit our Corporate Social Responsibility page at Duni.com

SYMBOLS GUIDE



Designed for optimal stackability.



Leak resistant.



Microwave safe.



Lid or sealing film does not mist up.



Hinged lid tears off easily.



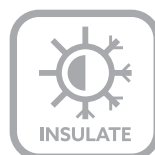
Oven safe.



Can be sealed by a Duniform® machine.



Can be customised with a logo, design or message.



Excellent insulation properties.



Made with wood from FSC®-certified forests or post-consumer waste.

The mark of responsible forestry

Innovative and eco-conscious design – for example made from biodegradable or recycled materials.

A man with a beard and short hair, wearing a striped t-shirt and a dark apron, stands in the doorway of a cafe. He has his arms crossed and is smiling. The cafe interior is visible behind him, featuring wooden shelves, a counter, and another person working. The scene is warmly lit, suggesting a cozy atmosphere.

DUNI

SUSTAINABLE GOODFOODMOOD

FOR MORE IDEAS AND
INFORMATION VISIT [DUNI.COM](https://duni.com)

This catalogue is printed
on FSC®-certified paper.

Duni AB
P O Box 237
SE-201 22 Malmö
+46 40 10 62 00
info@duni.com